



PELAREOREP

a transformative dsRNA immunotherapy platform
for gastrointestinal tumors

March 2026

Forward-Looking Statements



Confidential

This presentation is strictly confidential. Neither the Securities and Exchange Commission nor any state or foreign securities commission or regulatory authority has passed upon the adequacy or accuracy of this presentation. Any representation to the contrary is a criminal offense. This presentation does not constitute an offer to sell or a solicitation of an offer to buy any securities of Oncolytics Biotech Inc. (“Oncolytics” or the “Company”).

Forward-Looking Statements

This presentation contains forward-looking statements within the meaning of Section 21E of the Securities Exchange Act of 1934, as amended, and forward-looking information under applicable Canadian securities laws (such forward-looking statements and forward-looking information are collectively referred to herein as “forward-looking statements”). Forward-looking statements are statements that are not historical facts, and include, but are not limited to, statements regarding our belief as to the potential, mechanism of action and benefits of pelareorep as a cancer therapeutic, our stated goals and objectives, our anticipated patent protection, our belief in the commercial opportunities for pelareorep, pelareorep’s safety profile, expectations regarding the size and growth of the total addressable market with respect to various types of cancer, expectations regarding future studies and trials, including with respect to the timing, size, benefits, potential, feasibility, and results thereof, and other statements related to anticipated developments in Oncolytics’ business and technologies. In any forward-looking statement in which Oncolytics expresses an expectation or belief as to future results, such expectations or beliefs are expressed in good faith and are believed to have a reasonable basis, but there can be no assurance that the statement or expectation or belief will occur or be achieved. All forward-looking statements are qualified by the assumptions that are stated or inherent in such forward-looking statements. There can be no assurance that such assumptions will prove to be correct. Forward-looking statements are subject to various known and unknown risks and uncertainties, many of which are difficult to predict and are generally beyond our control, and which may cause the actual results, performance or achievements of Oncolytics, or industry results, to be materially different from any future results, performance or achievements expressed or implied by such forward-looking statements. Some of the important risks and uncertainties that could affect forward-looking statements and cause Oncolytics’ actual results to differ materially from those in the forward-looking statements are described further under the section heading “Item 3. Key Information –D. Risk Factors” of our Annual Report on Form 20-F for the fiscal year ended December 31, 2024. Investors should consult Oncolytics’ quarterly and annual filings with the Canadian and U.S. securities commissions for additional information on risks and uncertainties relating to the forward-looking statements. Investors are cautioned against placing undue reliance on forward-looking statements. The Company does not undertake to update these forward-looking statements, except as required by applicable laws.

Market and Industry Data

In this presentation, the Company relies on and refers to certain information and statistics obtained from third party sources which it believes to be reliable. The Company has not independently verified the accuracy or completeness of any such third party information. This data involves many assumptions and limitations and is subject to change, and therefore you are cautioned not to give undue weight to these estimates. In addition, this presentation does not purport to be all inclusive or to contain all of the information that may be required to make a full analysis of the Company. The recipient should make its own evaluation of the Company and of the relevance and adequacy of the information and should make such other investigations as it deems necessary.

Trademarks and Copyright

This presentation may contain trademarks, service marks, trade names and copyrights of other companies, which are the property of their respective owners. Solely for convenience, some of the trademarks, service marks, trade names and copyrights referred to in this presentation may be listed without the ® and ™ symbols, but the Company will assert to the fullest extent under applicable law the rights of the applicable owners, if any, to these trademarks, service marks, trade names and copyrights.

Projections

This presentation contains financial and other forecasts for the Company with respect to certain financial and other results for future periods. The projections are forward looking statements included for illustrative purposes only and should not be relied upon as being necessarily indicative of future results. Accordingly, there can be no assurance that the prospective results are indicative of the future performance of the Company or that actual results will not materially differ from those presented in the prospective financial information.

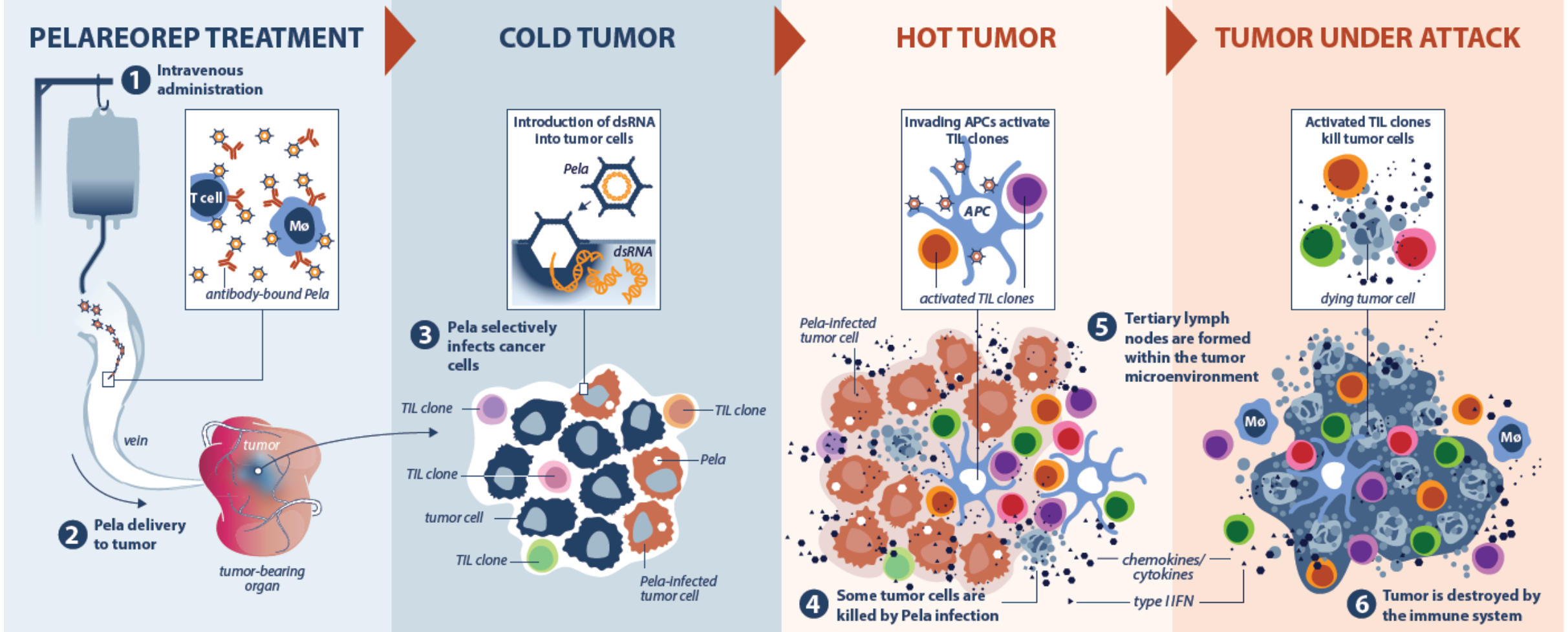
MISSION

We will leverage our proprietary product candidate, pelareorep (pela), an investigational first-in-class double-stranded RNA immunotherapeutic agent, to establish a platform immunotherapy for the treatment of gastrointestinal (GI) tumors.

We believe GI tumors are the largest unmet medical need in oncology and seek to provide patients across multiple GI tumors with a tolerable immunotherapy that increases the chances they will live longer lives.

PELAREOREP PROPOSED MECHANISM OF ACTION

<p>Intravenous pela evades neutralization by associating with mononuclear cells in the blood and is delivered to the tumor.</p>	<p>Pela selectively infects and replicates in tumor cells with RAS pathway mutations. Pela replication produces dsRNA in tumor cells.</p>	<p>Pela infection kills some tumor cells by cell lysis and initiates an inflammatory response, through activation of chemokines and cytokines creating a "hot" tumor.</p>	<p>The pela-initiated inflammatory response results in activation and expansion of TIL clones that can attack and kill the tumor.</p>
---	---	---	---

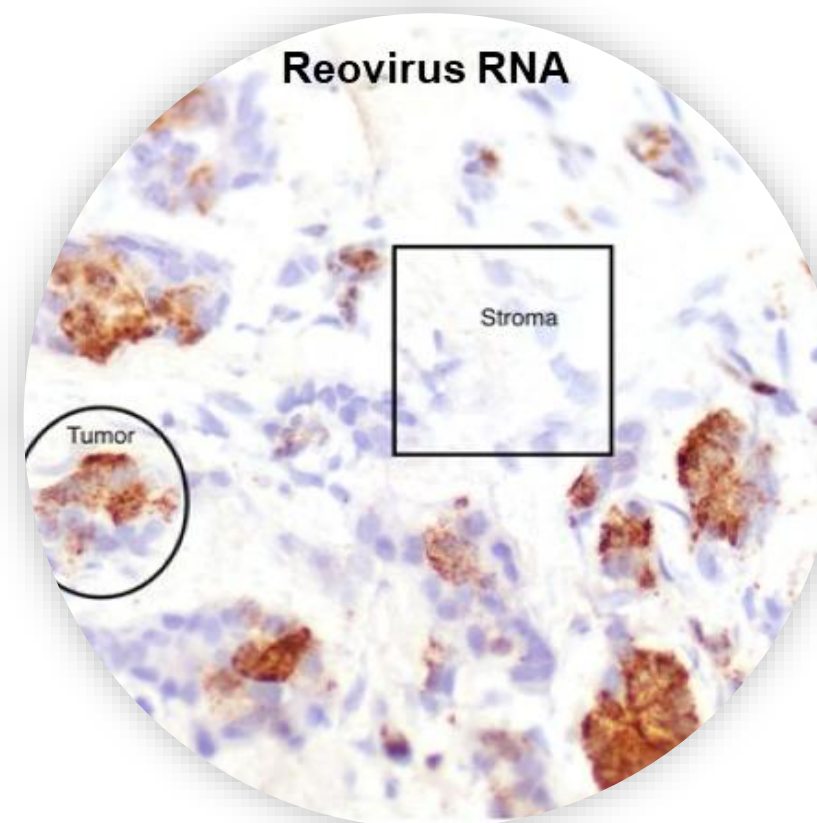


PELAREOREP HAS BEEN OBSERVED TO REPLICATE IN ALMOST ALL EVALUATED TUMORS

Pela is found in almost all on-treatment tumor biopsies

Indication treated with IV Pela	# of biopsied tumors	# Pela-positive biopsies
Pancreatic ductal adenocarcinoma	12	12
Metastatic colorectal cancer	12	11
Head and neck cancer	3	3
Gliomas/metastatic brain tumors	9	8
Relapsed multiple myeloma	20	20
Primary breast cancer	23	23
Other	4	4

Pela RNA is found in tumor but not stromal cells



Brown staining: PELA RNA

1. Berkeley, et al. Can Immunol Res. 2018
2. Adair, et al. Sci Transl Med. 2012
3. Mahalingam, et al. British J Can. 2023
4. Ilett, et al. Ther 2009
5. Ilett, et al. Clin Cancer Res. 2011
6. Phillips, et al. Oncolytic Virother. 2018

PELAREOREP SINGLE-AGENT ACTIVITY

REO 004 and REO 005 - Dose escalation studies of IV pelareorep in refractory metastatic solid tumors



REO 004

(N=18; Cancers: ovarian, colon, breast, cervical, sarcoma, carcinoid, prostate, lung)

- Pelareorep: 1×10^8 to 3×10^{10} TCID₅₀ per dose
- DCR = 45% (1 PR + 7 SD in 18 total patients)
- PR in metastatic breast cancer patient after 5 cycles



REO 005

(N=33; Cancers: bladder, head & neck, lung, sarcoma, pancreas, prostate, renal, colon, skin, gastric, endometrium, esophagus)

- Pelareorep: 1-5 doses per 28-day cycle; 1×10^8 to 3×10^{10} TCID₅₀ per dose
- Responses:
 - 8 SD including 4 with reduction in tumor size
 - 2 CRC patients had SD and reductions in CEA levels for 3 and 6 months
 - A prostate cancer patient had a 51% decrease in PSA



NU 18101

(Pelareorep + pembrolizumab in 2L mPDAC (no chemotherapy, all tumors MSS))

- Checkpoint inhibitors have shown no efficacy in MSS mPDAC
- ORR = 8%; DCR = 42%
- Tumor response comparable to chemotherapy indicating pelareorep activity

BROAD CLINICAL EXPERIENCE AND WELL-UNDERSTOOD SAFETY RESULTS



Pela has been evaluated in

>20 Oncolytics-sponsored studies and several externally sponsored studies (NCI, CCTG, etc.)

Multiple cancer indications (breast, pancreatic, colorectal, myeloma, brain, etc.)

>1,200 patients treated, including >300 patients with GI tumors

Most common PELA-adverse reactions:

- “Flu-like” symptoms: Fever, chills, headache, fatigue, myalgia, cough, anorexia
- GI symptoms also common: Nausea, diarrhea, vomiting
- Lymphopenia, neutropenia, thrombocytopenia also common, but rarely clinically significant
- No maximum tolerated dose (MTD) identified
- Adverse events usually last <6 hours and can be managed with OTC medications

Results from a pooled safety analysis (2017):

- A total of 563 patients were studied
- Fatigue was the most common grade ≥ 3 treatment-related adverse event (TRAE) (<10%)
- Grade ≥ 3 neutrophil count decreased and/or WBC decreased (<20%)
- Addition of pelareorep did not increase the frequency or severity of grade ≥ 3 TRAEs
- Most common serious TRAEs (<5%): fever, febrile neutropenia, sepsis and flu-like syndrome
- Considered “generally well-tolerated”

MARKET OPPORTUNITY WITHIN PELAREOREP'S TARGETED INDICATIONS

Gastrointestinal cancer is the fastest growing cancer in the world in people under 50 years old



2L Metastatic Colorectal Cancer (mCRC)

- ~ 1,900,000 patients globally⁴
- ~ \$20 billion total addressable market with 4.7% CAGR to 2033⁵
- RAS mutant patient population high unmet medical need
- 15% mCRC 5-year survival rate⁶



≥2L unresectable Squamous Cell Anal Carcinoma (SCAC)

- ~ 54,000 patients globally⁷
- ~ \$1.01 billion total addressable market with 8.7% CAGR to 2032⁸
- Evolving standard of care with very few treatment options
- 36% mSCAC 5-year survival rate⁹



1L Metastatic Pancreatic Ductal Adenocarcinoma (mPDAC)

- ~ 500,000 patients globally¹
- ~ \$3 billion total addressable market with 15% CAGR to 2032²
- Chemotherapy standard of care with no approved immunotherapy
- 3% mPDAC 5-year survival rate³

1. <https://www.wcrf.org/preventing-cancer/cancer-statistics/pancreatic-cancer-statistics/>. 2. <https://www.fortunebusinessinsights.com/pancreatic-cancer-treatment-market-101989>. 3. <https://www.cancer.org/cancer/types/pancreatic-cancer/detection-diagnosis-staging/survival-rates.html>. 4. <https://www.wcrf.org/preventing-cancer/cancer-statistics/colorectal-cancer-statistics/>. 5. <https://media.market.us/colorectal-cancer-therapeutics-market-news/>. 6. <https://www.cancer.org/cancer/types/colon-rectal-cancer/detection-diagnosis-staging/survival-rates.html>. 7. <https://gco.iarc.who.int/media/globocan/factsheets/cancers/10-anus-fact-sheet.pdf>. 8. <https://www.marketresearchfuture.com/reports/anal-cancer-market-1530>. 9. <https://www.cancer.org/cancer/types/anal-cancer/detection-diagnosis-staging/survival-rates.html>.

The background of the slide features a dark blue gradient with a faint, glowing blue handprint shape. The handprint is composed of numerous small, bright blue dots of varying sizes, which are more densely packed in the palm area and more sparse towards the fingers. The overall effect is a futuristic or scientific aesthetic.

PELAREOREP CLINICAL DEVELOPMENT

CLINICAL POC ACROSS TARGETED INDICATIONS GUIDES STRATEGIC SEQUENCING

Targeted indication	SOC benchmark*	Pela Data	Delta
2L mCRC (RAS-mutated)	OS: 11.2 mo, PFS: 5.7 mo ORR: 6-11% ^{1,2}	OS: 27 mo, PFS: 16.6 mo ORR: 33% ⁹	~ 2-3x
≥2L SCAC	ORR: 11-24% ³⁻⁶ DOR: 9.5 months ³	ORR: 30% DOR: 17 months	~ 1.5-3x
1L mPDAC	2-year OS rate: ~ 9% ^{7, 8}	2-year OS rate: ~ 22% ⁶	~ 2.5x

Development sequencing, short-term to long-term

2L mCRC: biomarker-driven study in RAS-mutated population to offset costs while validating the platform potential

≥2L SCAC: fastest potential registration path with potential single-arm study in rare disease with few treatment options

1L mPDAC: could be only registration-directed study with an immunotherapy candidate in indication; will seek partnership for study

mPDAC: metastatic pancreatic ductal adenocarcinoma; mCRC: metastatic colorectal cancer; SCAC: squamous cell carcinoma of the anal canal; pela: pelareorep; IST: investigator-sponsored trial; 1L: First-Line; 2L: Second-Line; SOC: standard of care; OS: overall survival; PFS: progression-free survival; ORR: objective response rate; DOR: duration of response *Benchmarks do not represent a head-to-head analysis, caution should be exercised when comparing data against unrelated studies or trials. 1. Bennouna J. Lancet Oncol (14):29-37, 2013. 2. Iwamoto S. Ann Oncol. Jul; 26(7): 1427-33, 2015. 3. Rao S, et al. Phase II study of retifanlimab in patients (pts) with squamous carcinoma of the anal canal (SCAC) who progressed following platinum-based chemotherapy. Annals of Oncology. 2020 September. 4. Marabelle A, et al. Pembrolizumab for previously treated advanced anal squamous cell carcinoma: results from the non-randomised, multicohort, multicentre, phase 2 KEYNOTE-158 study. Lancet Gastroenterol Hepatol. 2022 May;7(5):446-454. 5. Lonardi S, et al. Randomized phase II trial of avelumab alone or in combination with cetuximab for patients with previously treated, locally advanced, or metastatic squamous cell anal carcinoma: the CARACAS study. J Immunother Cancer. 2021 November;9(11):e002996. 6. Morris V, et al. Nivolumab for previously treated unresectable metastatic anal cancer (NCI9673): a multicentre, single-arm, phase 2 study, The Lancet Oncology, Volume 18 Issue 4, 2017. 7. https://oncolyticsbiotech.com/press_releases/oncolytics-biotech-highlights-transformative-pelareorep-survival-data-in-multiple-tumors-and-commitment-to-registration-enabling-studies/. 8. Mahalingam G, et al. A Phase II Study of Pelareorep (REOLYSIN®) in Combination with Gemcitabine for Patients with Advanced Pancreatic Adenocarcinoma. Cancers (Basel). 2018 May 25;10(6):160. 9. Goel, et al. Mol Cancer Ther (19): 1148-56, 2020

CLINICAL DEVELOPMENT PIPELINE



Near-term rare disease opportunity in SCAC and long-term platform expansion in CRC and PDAC

Program	Collaborator	Combination	Phase 1	Phase 2	Registration-Enabling Phase 3	Anticipated Milestone
2L CRC						
RAS-mutated Biomarker-focused study	TBD	chemo + bev +/- pela	[Progress bar: ~75%]			Launch 1H 2026
≥2L SCAC						
GOBLET cohort 4 ≥2L Unresectable SCAC		pela + atezo	[Progress bar: ~75%]			Final data readout expected 1H 2026
Pivotal Study	TBD	pela + CPI	[Progress bar: ~75%]			Potential single-arm study launch Q3 2026
1L PDAC						
Pivotal Study	Partner Expected	pela + GnP +/- CPI	[Progress bar: ~75%]			Expect to seek partnership for study
GOBLET cohort 5 Newly Diagnosed PDAC		pela + mFOL +/- atezo	[Progress bar: ~50%]			Initial data readout expected 2H 2026

The background of the slide is a microscopic view of various cancer cells, some appearing as large, irregular clusters and others as smaller, more spherical cells. A prominent feature is a large, central cell cluster that is highlighted with a white target symbol, consisting of a circle with a crosshair and tick marks, suggesting a focus of medical attention or treatment. The overall color scheme is a monochromatic blue, giving it a clinical and scientific feel.

COLORECTAL CANCER PROGRAM

***Received FDA Fast Track Designation**

EFFICACY RESULTS FOR PELAREOREP IN COLORECTAL CANCER DEMONSTRATED ACROSS MULTIPLE STUDIES



REO 022 study in 2L KRAS mutant mCRC results more than double historical third-party benchmarks^{1, 2, 3}:

- PFS: 16.6 months vs 5.7 months (pelareorep + FOLFIRI + bevacizumab vs. FOLFIRI + bevacizumab)
- OS: 27.0 months vs 11.2 months (pelareorep + FOLFIRI + bevacizumab vs. FOLFIRI + bevacizumab)
- ORR: 33% vs 6-11% (pelareorep + FOLFIRI + bevacizumab vs. FOLFIRI + bevacizumab)



Data from GOBLET in 3L mCRC met predefined efficacy criteria and exceed historical third-party benchmarks^{4, 5, 6, 7}:

- 40% DCR and 33% 12-month survival rate
- PFS: 2.8 month and median OS: 8.0 months



Translational data from REO 022 and REO 013 studies support observed benefit^{1, 7, 8, 9}:

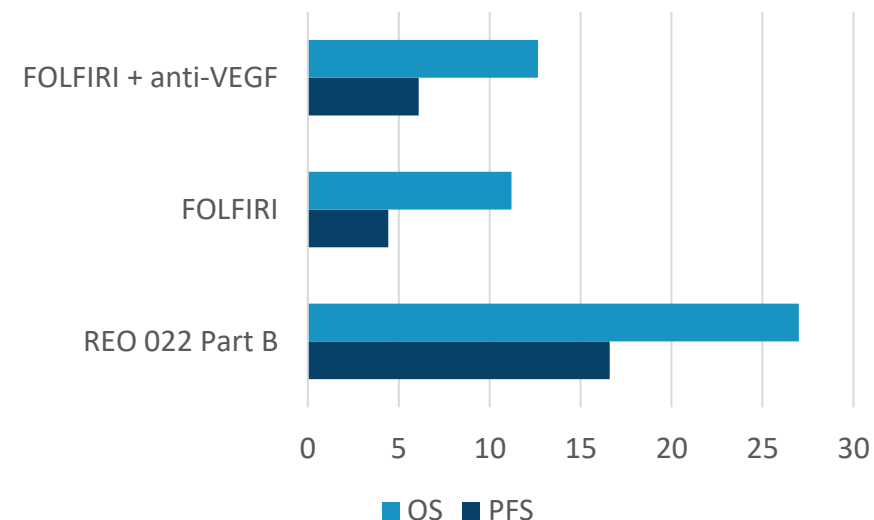
- Viral replication and immune activation shown in mCRC tumors
- Dendritic cell maturation and CD8+ T cell activation alter TME and enabled tumors to respond to treatment

*FOR ILLUSTRATIVE PURPOSES ONLY – not a head-to-head analysis. Differences exist between subject characteristics and trial designs, and caution should be exercised when comparing data across unrelated studies. 2L: second-line; mCRC: metastatic colorectal cancer; FOLFIRI: fluorouracil, leucovorin, and irinotecan; PFS: progression-free survival; OS: overall survival; ORR: objective response rate; 3L: third-line; DCR: disease control rate; TME: tumor microenvironment. 1. Goel, et al. Mol Cancer Ther (19): 1148-56, 2020; 2. Bannouna J. Lancet Oncol (14):29-37, 2013; 3. Iwamoto S. Ann Oncol. Jul;26(7):1427-33, 2015; 4. Ungerechts G et al. Pelareorep + atezolizumab and chemotherapy in third-line (3L) metastatic colorectal cancer (mCRC) patients – Interim results from the GOBLET study, ESMO Congress 2023; 5. Mayer et al. N Engl J Med 2015; 372:1909-1919; 6. Moriwaki et al. The Oncologist 2018; 23(1):7-15; 7. Bachet et al. ESMO Open. 2020 Jun;5(3):e000698.; 8. Adair RA, et al. Cell carriage, delivery, and selective replication of an oncolytic virus in tumor in patients. Sci Transl Med. 2012 Jun 13;4(138):138ra77; 9. El-Sherbiny YM, et al. Controlled infection with a therapeutic virus defines the activation kinetics of human natural killer cells in vivo. Clin Exp Immunol. 2015 Apr;180(1):98-107

REO 022 STUDY OF PELAREOREP IN $\geq 2L$ KRAS-mutant MSS mCRC

The combination of pelareorep with SOC equates to ORR, PFS, and OS that is 2-3X SOC

Design	Phase 1 dose escalation
Population	15 Part B patients; Metastatic or advanced KRAS-mutated colorectal cancer; Refractory to oxaliplatin
Treatment	pelareorep + FOLFIRI + bevacizumab
Endpoints	Efficacy (PFS, OS), safety

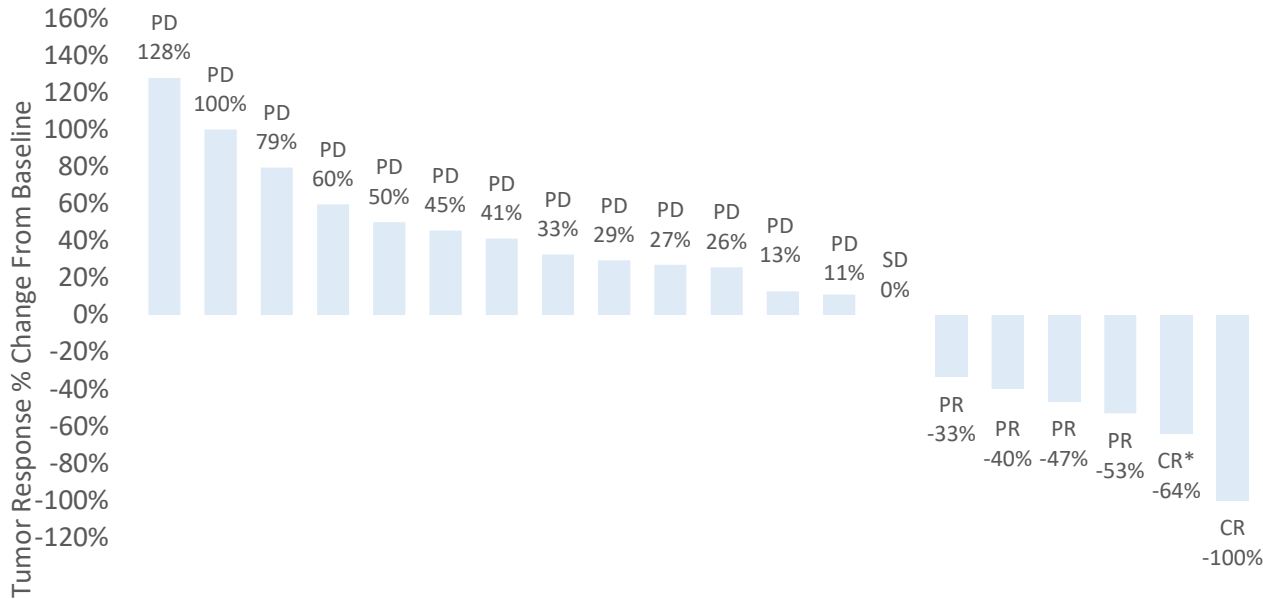


	REO 022 Part B	FOLFIRI ¹	FOLFIRI + Ramucirumab ¹	FOLFIRI ²	FOLFIRI + Aflibercept ²	FOLFIRI ³	FOLFIRI + Bevacizumab ³
OS (months)	27.0	11.7	13.3	12.1	13.5	9.8	11.2
PFS (months)	16.6	4.5	5.7	4.67	6.9	4.1	5.7
ORR	33%	12.5%	13.4%	11.1%	19.8%	4%	5%

ANAL CANCER PROGRAM



Strong efficacy signal with immunotherapy combination without chemo in difficult cancer



- 30% ORR in 20 evaluable ≥2L patients
- 29% ORR in 14 evaluable ≥3L patients
- Durable responses:
 - 2 CR (one response lasting 15 and the other ~28 months and ongoing)
 - Median duration of response was 17 months compared to 9.5 months for the current approved therapy¹

ORR: objective response rate; 2L: second-line; SCAC: squamous cell carcinoma of the anal canal; pela: pelareorep; atezo: atezolizumab; DCR: disease control rate; CR: complete response; PR: partial response; PD: progressive disease; SD: stable disease

*Complete response (CR) recorded by the investigator based on RECIST version 1.1 criteria and a reduction in the size of the malignant lymph node target lesions to normal and the disappearance of all non-target lesions

1. Rao S, et al. Phase II study of retifanlimab in patients (pts) with squamous carcinoma of the anal canal (SCAC) who progressed following platinum-based chemotherapy. Annals of Oncology. 2020 September

The background of the slide is a dark blue, semi-transparent image showing a microscopic view of various cancer cells. The cells are rendered in a light blue, wireframe-like style, revealing their complex, irregular shapes and some with visible branching or root-like structures. A prominent feature is a large, central cell that is the focus of a white target overlay. This target consists of a central crosshair, a horizontal line with tick marks, and a vertical line with tick marks, all enclosed within a circular border. The overall aesthetic is scientific and clinical.

PANCREATIC CANCER PROGRAM

***Received FDA Fast Track & Orphan Drug Designations**

CONSISTENT SURVIVAL BENEFIT OBSERVED IN MULTIPLE 1L MPDAC STUDIES



Clinical results of pelareorep in first-line mPDAC studies

Company (Study)	Description (Patients)	1-Year Survival	2-Year Survival	Notes
Oncolytics (REO 017)	Pelareorep + Gemcitabine (34 patients)	45% vs. 22%	24% vs. 4%	DCR: 83% vs. 33% Single arm vs. gemcitabine benchmark
Oncolytics/NCI (NCI 8601)	Paclitaxel/Carboplatin + Pelareorep (36 patients) vs. Paclitaxel/Carboplatin (37 patients)	34% vs. 28%	20% vs. 6%	Randomized study vs. control arm (excluding crossover)
Oncolytics (REO 029 – Cohort 1)	Pelareorep + Gemcitabine/ Nab-Paclitaxel + atezolizumab (13 patients)	45% vs. 35%	N/A	ORR: 62% vs. 23% Single arm vs. gemcitabine/ nab-paclitaxel benchmark
Oncolytics (REO 029 – Cohort 5)	Pelareorep + modified FOLFIRINOX +/- atezolizumab (enrollment completed)	TBD	TBD	

2-YEAR SURVIVAL RATES IN 1L METASTATIC PDAC: COMPARISON TO LANDMARK STUDIES

	2-year survival
Pela-based therapy	21.9%
Comparator treatment arms (n=9)	9.2%

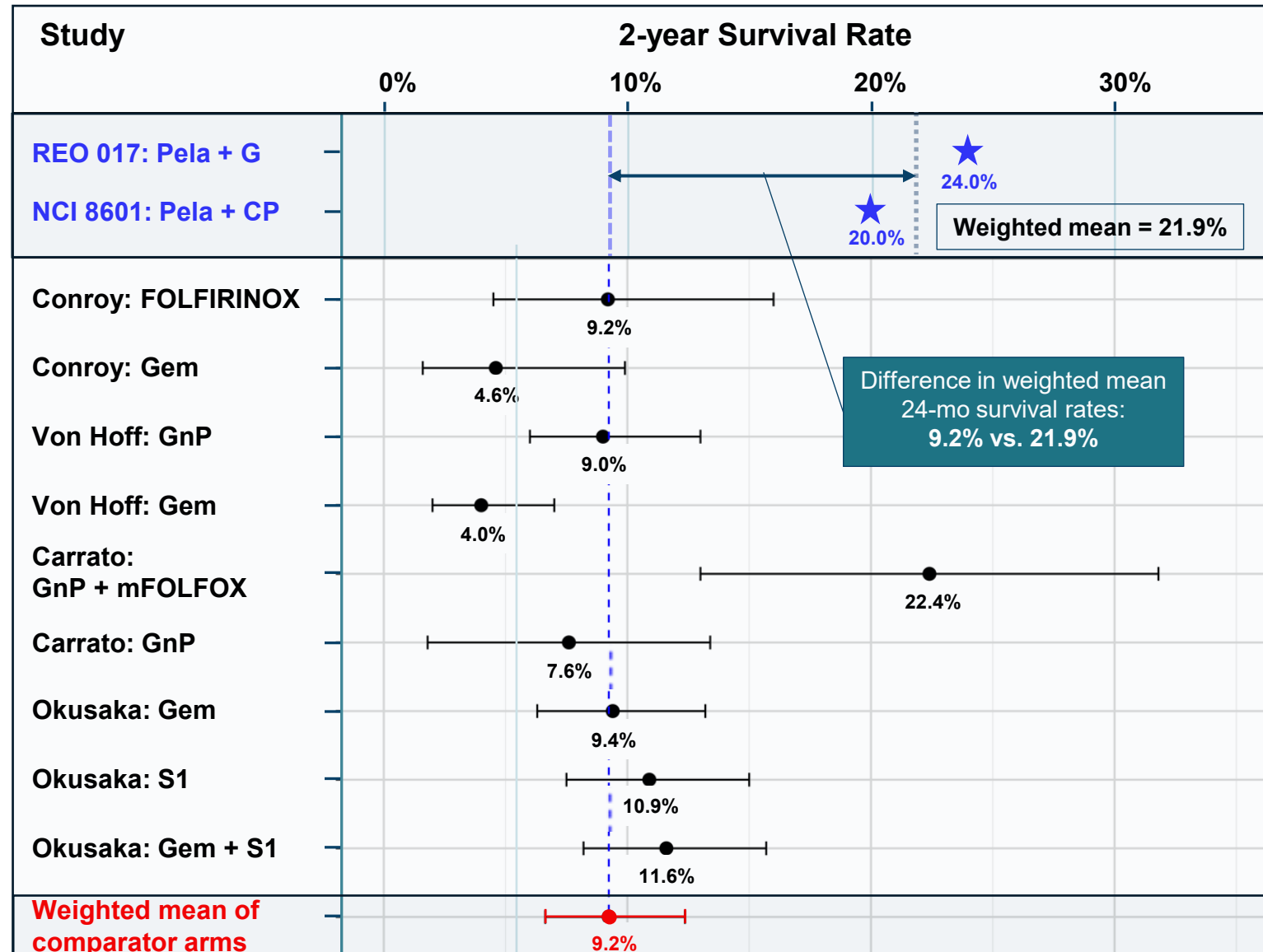
Legend

G / Gem = gemcitabine
CP = carboplatin
GnP = gemcitabine + nab-paclitaxel
S1 = oral fluoropyrimidine
FOLFOX = folinic acid, fluorouracil and oxaliplatin
FOLFIRINOX = FOLFOX + irinotecan
Dotted lines = weighted means

References

FOR ILLUSTRATIVE PURPOSES ONLY – not a head-to-head analysis. Differences exist between subject characteristics and trial designs, and caution should be exercised when comparing data across unrelated studies.

Carrato, et al., NEJM Evid. 2024
 Mahalingam, et al. Cancers. 2018
 Okusaka, et al., Res Clin Oncol. 2017
 Noonan, et al., Mol Ther. 2016
 Von Hoff, et al., NEJM, 2013
 Conroy, et al., NEJM, 2011



Pela-based therapy

Select comparator treatment arms

Difference in weighted mean 24-mo survival rates:
9.2% vs. 21.9%



**REGULATORY, INTELLECTUAL
PROPERTY AND MANUFACTURING**

REGULATORY STRATEGY BASED ON EXTENSIVE CLINICAL DATA

Regulatory Strategy

- Proof of concept solidly established in three GI tumors
- Focus on most efficient regulatory path in high unmet medical need indications with large commercial potential
- Utilize regulatory designations and biomarker driven studies
- Launched biomarker-driven 2L CRC study in RAS-mutated patient population
- $\geq 2L$ SCAC study expected to be a single arm study with an approval based on ORR
- 1L PDAC study with chemo and CPI expected to focus on overall survival with two experimental arms
- Continue partnership discussions to advance development quickly and efficiently

Indication	Design	Trial Activities (estimated)
2L CRC	Randomized; Sponsored	1H 2026
$\geq 2L$ SCAC	Single-Arm; Sponsored	1H 2026
1L PDAC	Randomized; Partnered	Ongoing

Commercial Strategy

- Position pelareorep as a platform in a product in three GI indications
- Partners interested in launching a platform immunotherapy in GI indications can enter at any point during the clinical development pathway

Intellectual Property

- 149 patents issued worldwide
- New patents expected to extend manufacturing and method of use protection into 2044
- Composition of matter protection through 2028
- Existing method of use and manufacturing protection through 2031
- Pending filings for proprietary manufacturing methods regarding virus harvest and extraction

Manufacturing

- Non-genetically modified Reovirus
- No special handling requirements
- High yield and low COGs
- Made in Carlsbad, California from products generally sourced in the USA
- Transferrable technology and procedures with clean IP ownership profile
- Easy to scale for large studies or commercial launch in multiple indications

INNOVATIVE LEADERSHIP TEAM WITH STRONG IMMUNO-ONCOLOGY, BUSINESS DEVELOPMENT, CLINICAL TRIAL AND FINANCE EXPERTISE



Transactional expert having led more than 50 deals, including \$2 billion Ambrx sale to JNJ in 2024

Jared Kelly

Chief Executive Officer
Board Member



Over 20 years of finance and accounting expertise focused on biotech and public company matters

Kirk Look, CA, MSJ

Chief Financial Officer



Nearly 30 years of drug development experience with an expertise in virology and oncology

Thomas Heineman, M.D., Ph.D.

Chief Medical Officer

Expertise in supply chain management, process performance qualification and manufacturing



Allison Hagerman, PEng, PMP, MBT

Chief Technology Officer

Over 30 years of expertise in oncology portfolio optimization and business development transactions



Andrew Aromando

Chief Business Officer

Over 20 years of clinical research and development experience at late-stage biotech, particularly oncolytic virus companies



John McAdory

EVP, Strategy & Operations

